

BioStation 3 Max

Trust, engineered into every door.



BioStation 3 Max is Suprema's flagship AI-powered biometric terminal for identity-first security. Built for busy lobbies and mission-critical entrances, it combines a hardened, highly certified platform with fast, trusted multi-factor authentication and broad credential support in one enterprise-ready 7-inch touchscreen device.

Suprema
SECURITY & BIOMETRICS

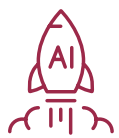
BioStation 3 Max

AI-Powered Biometric Terminal



Identity-first security and enterprise compliance.

BioStation 3 Max is built on a hardened Linux platform with Secure Boot, secure tamper response, encrypted biometric protection, and privacy-preserving features such as Template on Mobile. Multi-factor authentication strengthens control at the door, while CC EAL6+ certified secure components and broad certification coverage help meet the trust, compliance, and deployment requirements of enterprise and regulated environments.



Access at the blink of an eye.

Powered by a dedicated NPU-based AI engine, BioStation 3 Max delivers sub-second face matching, strong spoof detection, and always-on operation even in busy lanes. It brings high-level performance and capacity to high-traffic lobbies, speed gates, and large enterprise deployments that demand both speed and stability.



One touch, every access, always connected.

With BioStation 3 Max, the moment a visitor's face appears, the gate opens and they're already connected to reception. Face, fingerprint, card, mobile, QR, PIN (2FA)—every authentication method works on a single terminal, and the built-in intercom lets staff communicate in real-time. No more hardware clutter. One clean device. One professional impression. This is how premium organizations secure their entrances today.



Designed to make an entrance.

BioStation 3 Max is built to be seen... and built tough. Its slim form factor, and 7-inch touchscreen make it a natural fit for premium lobbies where experience and brand image matter. Behind the polished look, IP65 and IK06 ratings protect it from dust, water, and everyday knocks, keeping it reliable in busy front-of-house environments.

Specifications

MODEL	BS3M-OAPB	BS3M-ODB	BS3M-APB	BS3M-DB
Max. User	100,000 ¹⁾			
Max. Credentials (1:N)	Face : 50,000 Fingerprint, Card : 100,000		Face : 50,000 Card : 100,000	
Max. Credentials (1:1)	Face, Fingerprint, Card, PIN : 100,000		Face, Card, PIN : 100,000	
Max. Text Logs	5,000,000			
Max. Image Logs	50,000			
Fingerprint	2 per user		-	
Live Fingerprint Detection	SW LFD		-	
Face Template	10 per user			
RF Option	EM, MIFARE, MIFARE Plus, DESFire EV1/EV2/EV3 ²⁾ , FeliCa, iCLASS SE/SR/Seos, HID Prox	EM, MIFARE, MIFARE Plus, DESFire EV1/EV2/EV3 ²⁾ , FeliCa	EM, MIFARE, MIFARE Plus, DESFire EV1/EV2/EV3 ²⁾ , FeliCa, iCLASS SE/SR/Seos, HID Prox	EM, MIFARE, MIFARE Plus, DESFire EV1/EV2/EV3 ²⁾ , FeliCa
RF Read Range ³⁾	EM/MIFARE/DESFire/HID iCLASS: 50 mm, HID Prox/FeliCa: 30 mm			
Mobile	NFC, BLE			
QR/Barcode ⁴⁾	Supported ⁵⁾			
CPU	1.4 GHz Quad Core			
Memory	32 GB Flash + 4 GB RAM			
Camera	2MP × 2EA (Visual, IR)			
IP Rating	IP65			
IK Rating	IK06			
Weight	640g (Bracket: 206g)		565g (Bracket: 187g)	
Dimension (WxHxD)	119.8 × 268.3 × 23.5 (49.6) mm		119.8 × 233 × 23.5 mm	
Power	[12 Vdc] Current: Max. 2.1 A [24 Vdc] Current: Max. 1 A			
Certificates	CE(CE models only), UKCA, KC, FCC, IC, RCM, RoHS, REACH, WEEE, SIG, MIC, TELEC, ETL Listed to UL 294			
Ethernet	Supported (10/100/1000 Mbps, auto MDI/MDI-X)			
RS-485	1ch Master / Slave (Selectable)			
Wiegand	1ch Input, 1ch Output			
Input	3ch Inputs			
Relay	1 Relay			
USB Host	USB 2.0 (Type-C)			
Extended USB	Supported			
PoE ⁶⁾	Supported (IEEE 802.3at compliant)	-	Supported (IEEE 802.3at compliant)	-
Intercom	Supported			

1) The number of users registered without having any credential data.

2) DESFire EV2/EV3 cards are backward compatible with DESFire EV1 cards, supporting CSN and smartcard features, including those of the DESFire EV1 card.

3) RF read range will vary depending on installation environment.

4) Supports QR/Barcodes composed of up to 32 ASCII code strings.

5) Camera QR license is required to use more diverse QR/barcode authentication. For detailed information on device licenses, please refer to the BioStar X Administrator Guide.

6) Requires PoE+ (IEEE 802.3at, 30 W) or PoE++ (IEEE 802.3bt, 60–100 W) power. Standard PoE (IEEE 802.3af, 15.4 W) is not supported. Using standard PoE may cause devices to operate unstably or be permanently damaged. Before connecting the device, make sure your network switch or PoE injector supports PoE+ or PoE++.

Suprema Inc.

17F Parkview Tower, 248, Jeongjail-ro, Bundang-gu, Seongnam-si, Gyeonggi-do, 13554, Republic of Korea

T +82 31 783 4502 W www.supremainc.com



For more information visit our website below by scanning the QR code.
<https://www.supremainc.com/en/about/contact-us.asp>

suprema
SECURITY & BIOMETRICS